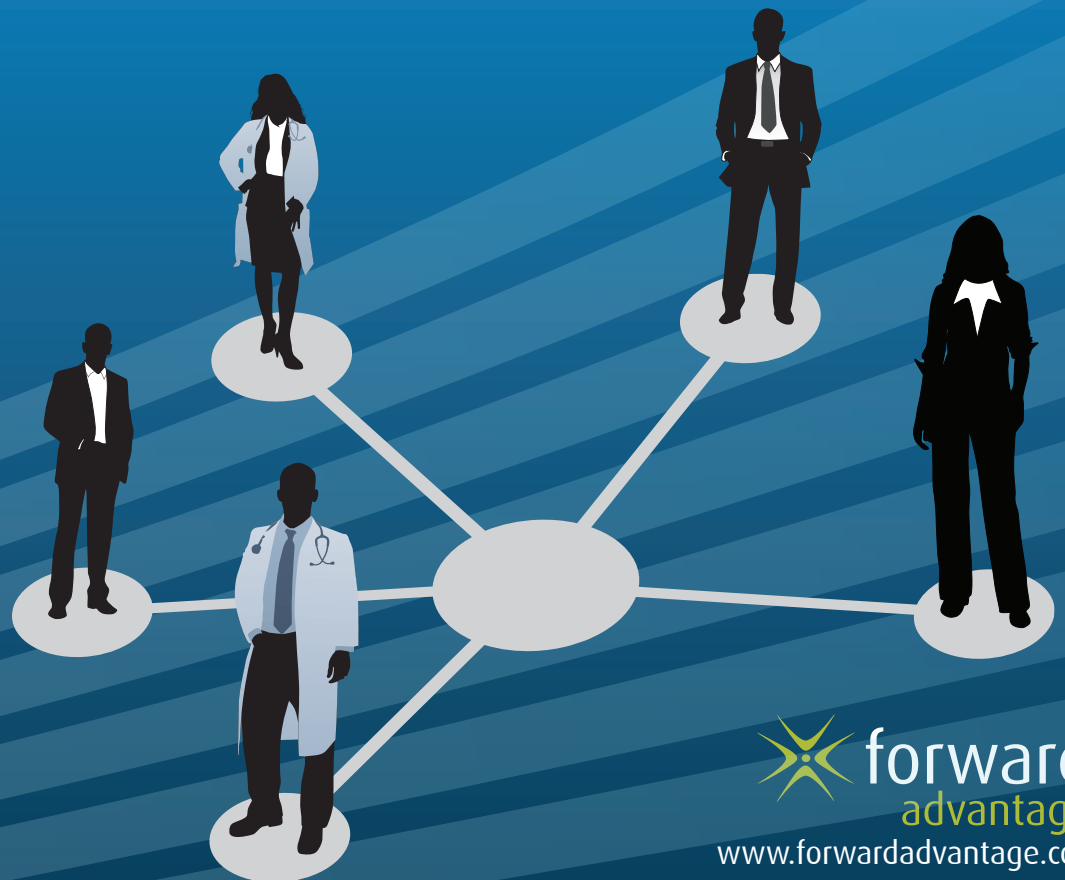


Community Health Information Exchange Foundations (CHIEF)

The Foundational HIE Solution for MEDITECH Communities

Creating interoperability between health information systems is a top initiative for today's healthcare organizations. Hospitals and physicians are looking to achieve Meaningful Use and are seeking answers on how to effectively participate in a Healthcare Information Exchange (HIE). Similarly, hospitals and physicians already participating in an HIE may feel that the efficiency with which they exchange healthcare information could be improved.

CHIEF has been co-developed with MEDITECH for MEDITECH communities to fulfill the promise of exchanging health information now and into the future.



The Solution

In collaboration with MEDITECH, Forward Advantage has co-developed CHIEF to facilitate the exchange of healthcare information based on industry standards. CHIEF lays the groundwork by meeting the Meaningful Use criteria for Stage 1 and Stage 2 (in current form) and preparing the foundation for Stage 3. Hospitals and ambulatory offices that are part of an integrated delivery network (IDN) or health information exchange (HIE) submit patient encounter information to a registry and, depending upon their configuration, may submit a patient's CCD as well. Users can run searches to identify available CCDs from other participants in the exchange. **CHIEF leverages a proven, IHE standards-based technical framework and is flexible, scalable, and customizable to meet your community's needs for an HIE.**

Ease of Use

Forward Advantage has always been about providing technologies to MEDITECH customers in a way that works for, not against, the end user. CHIEF stays true to this commitment by working seamlessly in the background of your native environment to facilitate a community-based HIE. CHIEF provides a Cross Enterprise Document Sharing registry to store document metadata; patient identifiers, such as local medical record numbers and global patient ID numbers; and public health record identifiers, such as those used by state immunization registries. With this information contained in the registry, patient identifiers and corresponding documents are linked together across multiple-record systems. This creates a virtual patient record and eliminates the need to copy data from different sites into a central repository. End users easily search the registry using patient matching criteria against all participating systems. When a patient match is found, CHIEF returns a summary of available patient documents to the users' native EMR where they can be accessed on demand. This prevents users from having to leave the EMR application they use on a daily basis to access patient CCDs and other documents located by CHIEF.

Benefits

As a solution co-developed with MEDITECH, healthcare organizations are assured that CHIEF is tightly integrated with the MEDITECH HCIS. This provides a user-friendly approach to access information directly through MEDITECH. Providers are able to save time locating pertinent patient information and have a more complete view of a patient's medical history. Furthermore, patients benefit from a more efficient and accurate care experience.

Key Features:

- Co-developed with MEDITECH for seamless integration with the MEDITECH HCIS (MAGIC, Client/Server, and 6.x)
- Based on the IHE ITI Technical Framework
- Provides the ability to link patient identifiers from multiple EMPI systems, allowing the MEDITECH CCD package to be extended to a variety of participants
- Provides a Web application for users without access to a system that supports CCD exchange
- Fully auditable and ensures the secure exchange of patient information
- Conforms to a wide range of patient search criteria that can be customized by each organization
- Using Basic Patient Privacy Consents, CHIEF is able to support the highly demanding policies and regulations for patient consent and privacy concerns
- Supports current and future Meaningful Use requirements

CHIEF: The Foundational HIE Solution for MEDITECH Communities

For more information, please contact us at:

Forward Advantage
7255 N. First Street, Suite 106
Fresno, CA 93720 USA

1-877-636-7927 (t) 1-559-436-4217 (f)
info@forwardadvantage.com - www.forwardadvantage.com

